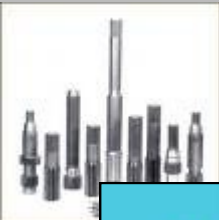


COSTIMATOR®

How to estimate
Turned Shafts
in less than
One Minute!

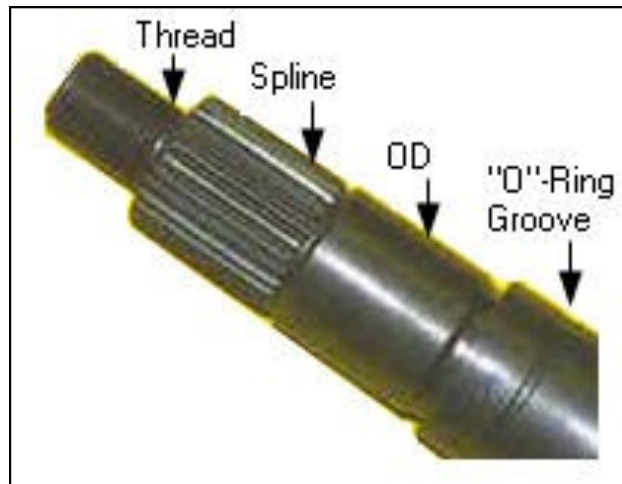


COSTIMATOR®

Copyright © 2008 MTI Systems, Inc All Rights Reserved

All materials contained in this document, including text, graphics, icons are the property of MTI Systems, Inc and are protected by United States and international copyright laws. The compilation of all content on this site is the exclusive property of MTI Systems, Inc. No part of this document may be reproduced or transmitted in any form or by any means, electronic or mechanical, including photocopying, recording, or by any information storage and retrieval systems without our prior written permission. Further, you may not alter or remove any trademark, copyright or other notice from copies of content should you get our written permission.

Following is an example of how to estimate a part using the new Costimator system. Check the clock time as we move through the estimate. Here's a picture of the part being estimated.



Copyright © 2008 MTI Systems, Inc All Rights Reserved

Part

Initial Custom Other

Part Number Turned Shaft 101

Part Name

Customer

Job Number

Revision

Drawing

Estimator tom

Salesperson

Due date

Default Plant <Not specified>

Note

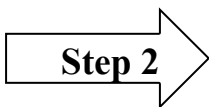
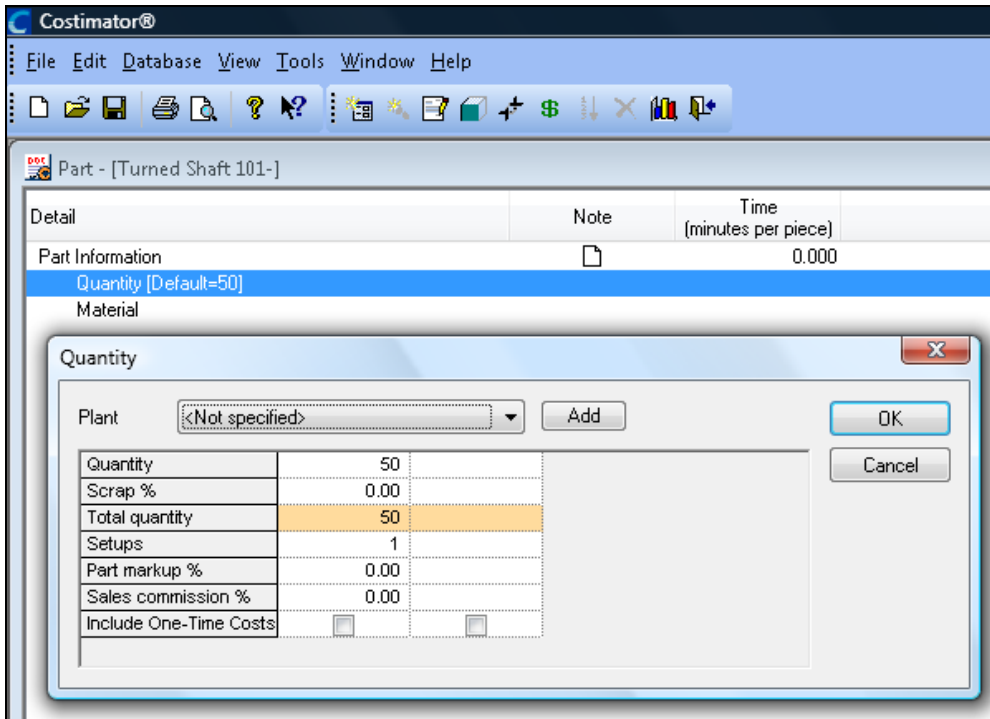
Default units

OK Cancel Help

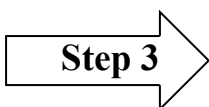
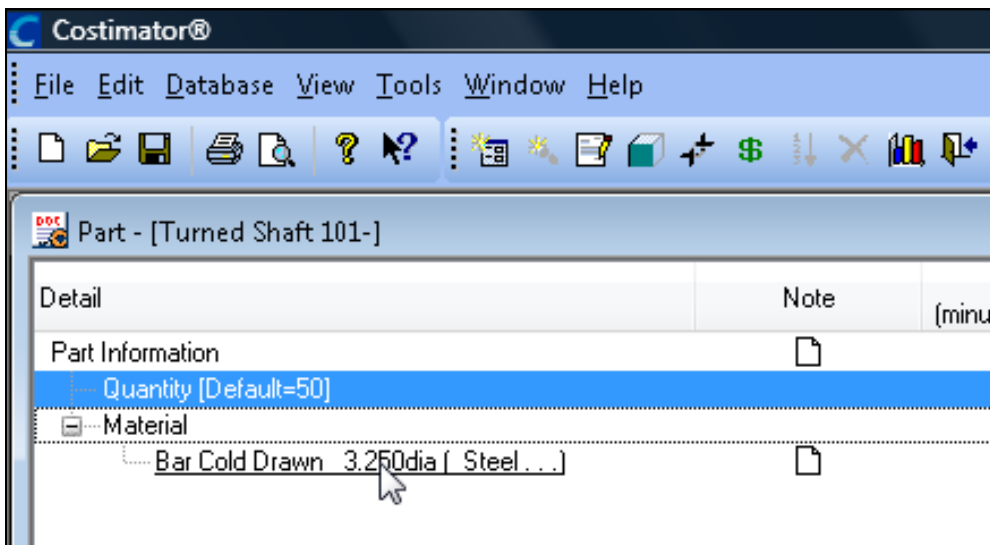
Step 1

Getting Started:
Create a new part as shown.

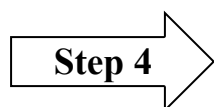
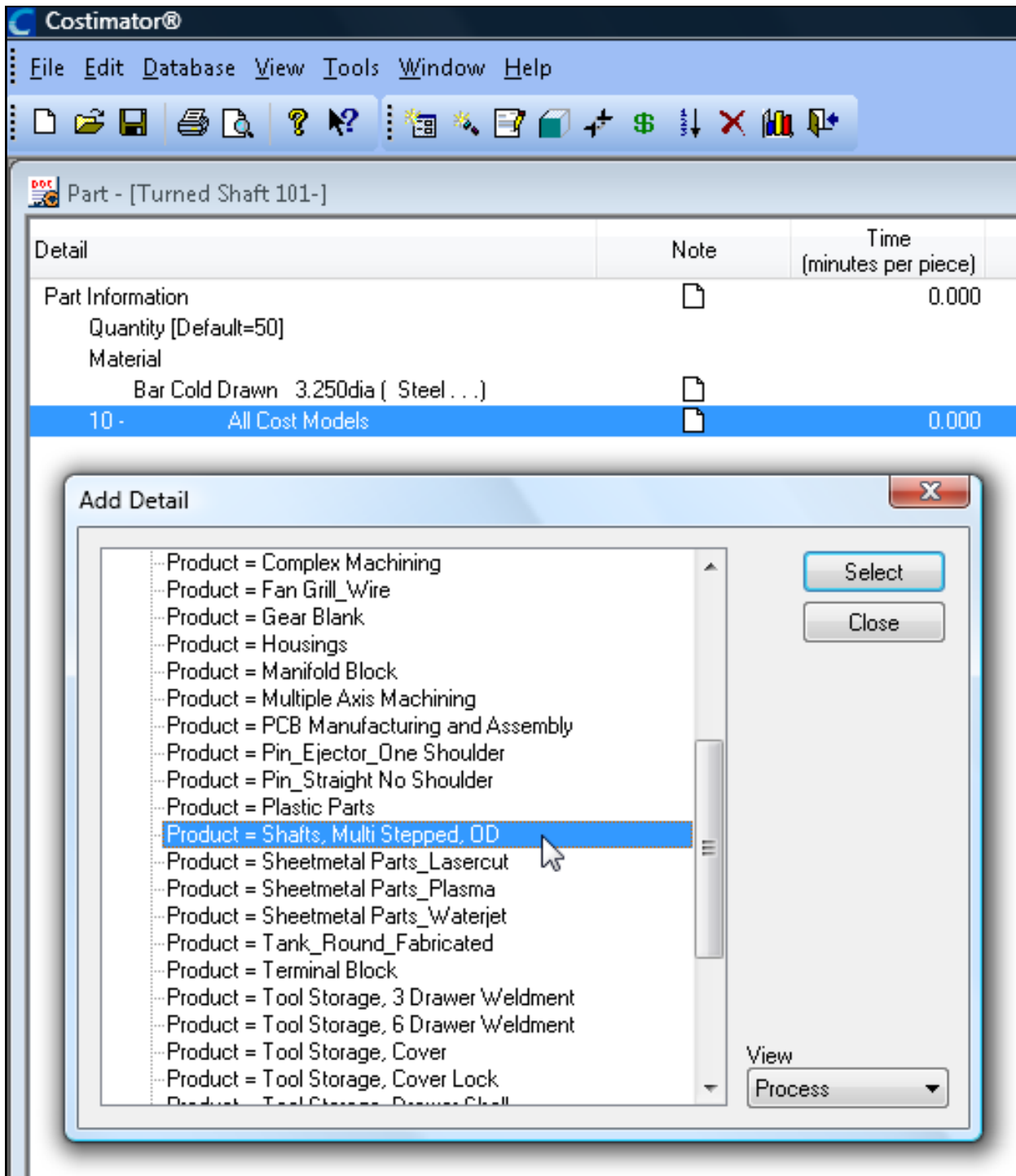




Part Quantity:
Enter a quantity.



Material Type:
Select material type & size.



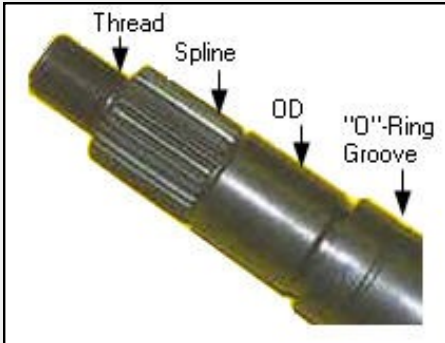
Shafts_Multi Stepped OD:
 Select “Shafts_Multi Stepped” from the list of Product Models.



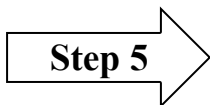
Cost Modeler - [Product = Shafts, Multi Stepped, OD]

Stock Diameter	3.250	in
Part Length	12.000	in
1st Dia Size	3.000	in
Length	7.000	in
2nd Dia Size	2.400	in
Length	1.250	in
3rd Dia Size	2.375	in
Length	1.200	in
1st Thread Dia	1.500	in
Pitch (Threads/Inch)	12.000	
Length	1.100	in
1st "O" Ring Dia	2.880	in
Spline Length	1.200	in
Number of Teeth	14.000	
Time per piece	4.389	minutes
Cost per piece	1.882	

Buttons: OK, Cancel, Note..., Show Data..., Data Notes



Enter Part Data:



This is the type of part that this cost model is used to estimate quickly and accurately.

FINISHED!



Showing detail for [Product = Shafts, Multi Stepped, OD]

Variable Name	Display Name	Formula	Output Value
TimePiece	Time per Piece	FacingTime + OD...	263.314
OD	Stock Diameter	StockDiameter()	3.250
StkLgt	Part Length	PartLength()	12.000
FacingDistance		(OD/2)	1.625
FacingTime		Turn_Face(1 , 2 , ...	0.145
OD01	1st Dia Size		3.000
Lgt01	Length		7.000
OD01Time		Turn_Turn_Roug...	0.682
OD02	2nd Dia Size		2.400
Lgt02	Length		1.250
OD02Time		Turn_Turn_Roug...	0.225
OD03	3rd Dia Size		2.375
Lgt03	Length		1.200
OD03Time		Turn_Turn_Roug...	0.086
OD04	4th Dia Size		0.000
Lgt04	Length		0.000
OD04Time		Turn_Turn_Roug...	0.000

Labor Rate = 25.725

Close

Here is how the program accurately calculates the estimate. In the background, the program is selecting the tooling, number of cuts, calculating speeds, feeds, checking the work center properties and more.

Costimator®

File Edit Database View Tools Window Help

Part - [Turned Shaft 101-]

Detail	Note	Time (minutes per piece)	Cost per piece
Part Information		4.509	13.385
Quantity [Default=50]			
Material			9.860
Bar Cold Drawn 3.250dia (Steel . . .)			9.860
-10 - All Cost Models		4.509	3.524
Product = Shafts, Multi Stepped, OD		4.389	1.882

This is the time and cost to manufacture this part.

Thanks for taking the time to review this new and exciting version of the Costimator program. You will be as excited as we are once you get your copy of the new . . .

COSTIMATOR®

**Contact your Account Manager
for further details.**

MTI Systems, Inc.
59 Interstate Drive
West Springfield, MA 01089

800-644-4318

In Western Mass: 413-733-1972
Fax: 413-739-9250

www.mtisystems.com