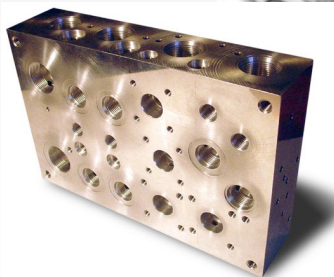
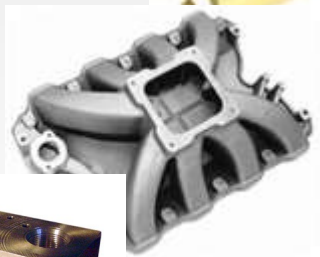


COSTIMATOR[®]

*How to estimate
Machined Parts
in less than
One Minute!*



COSTIMATOR®

Copyright © 2008 MTI Systems, Inc All Rights Reserved

All materials contained in this document, including text, graphics, icons are the property of MTI Systems, Inc and are protected by United States and international copyright laws. The compilation of all content on this site is the exclusive property of MTI Systems, Inc. No part of this document may be reproduced or transmitted in any form or by any means, electronic or mechanical, including photocopying, recording, or by any information storage and retrieval systems without our prior written permission. Further, you may not alter or remove any trademark, copyright or other notice from copies of content should you get our written permission.

Following is an example of how to estimate a part using the new Costimator system. Check the clock time as we move through the estimate.

Part

Initial Custom Other

Part Number Manifold Block 101 Note

Part Name Default units

Customer ...

Job Number

Revision

Drawing

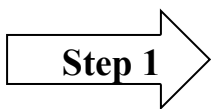
Estimator tom

Salesperson

Due date

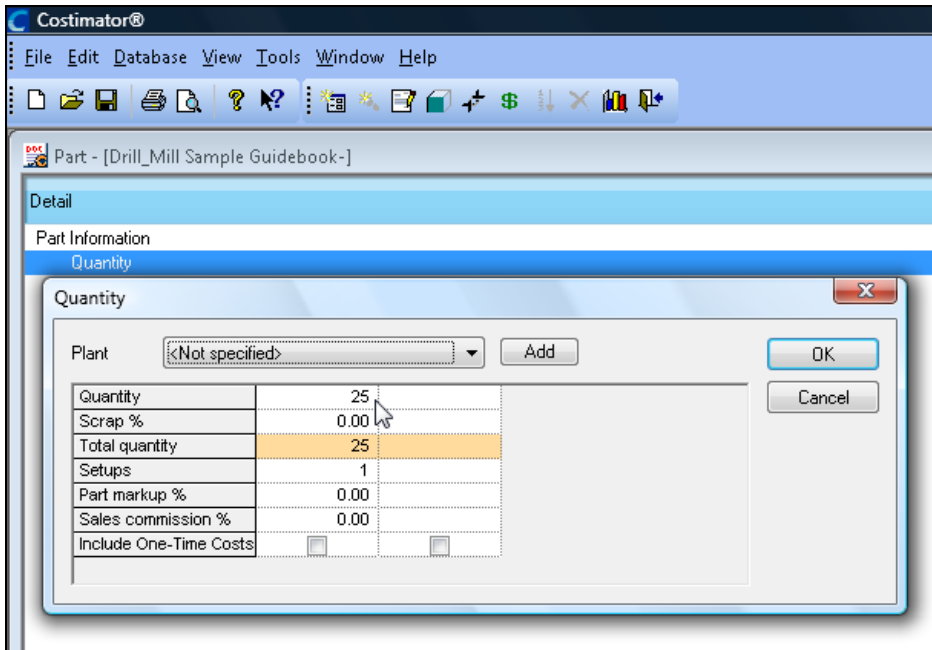
Default Plant <Not specified>

OK Cancel Help

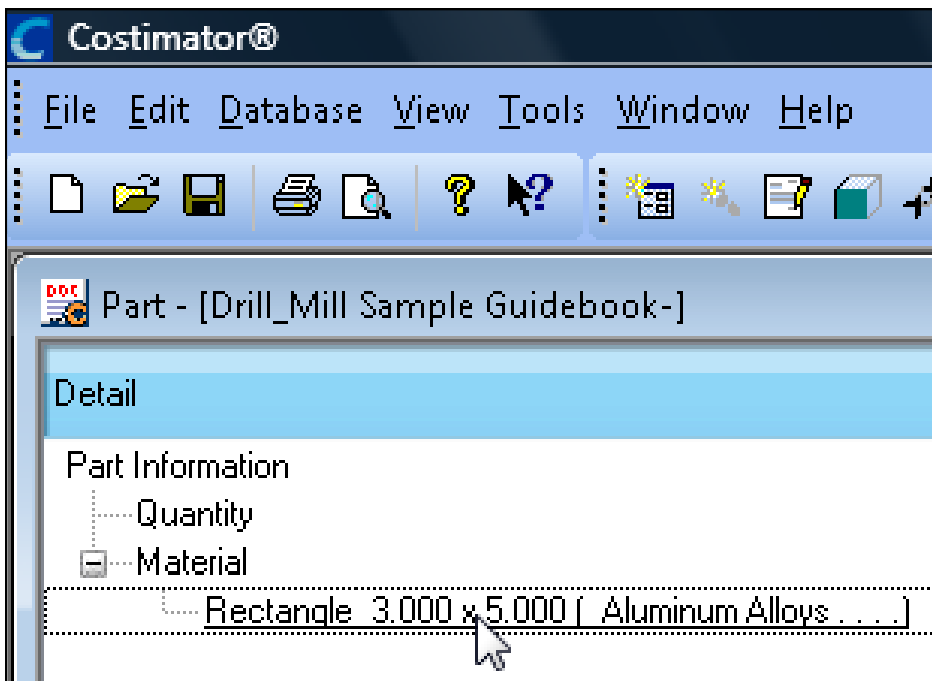


Getting Started:
Create a new part as shown

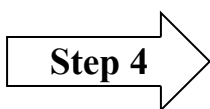
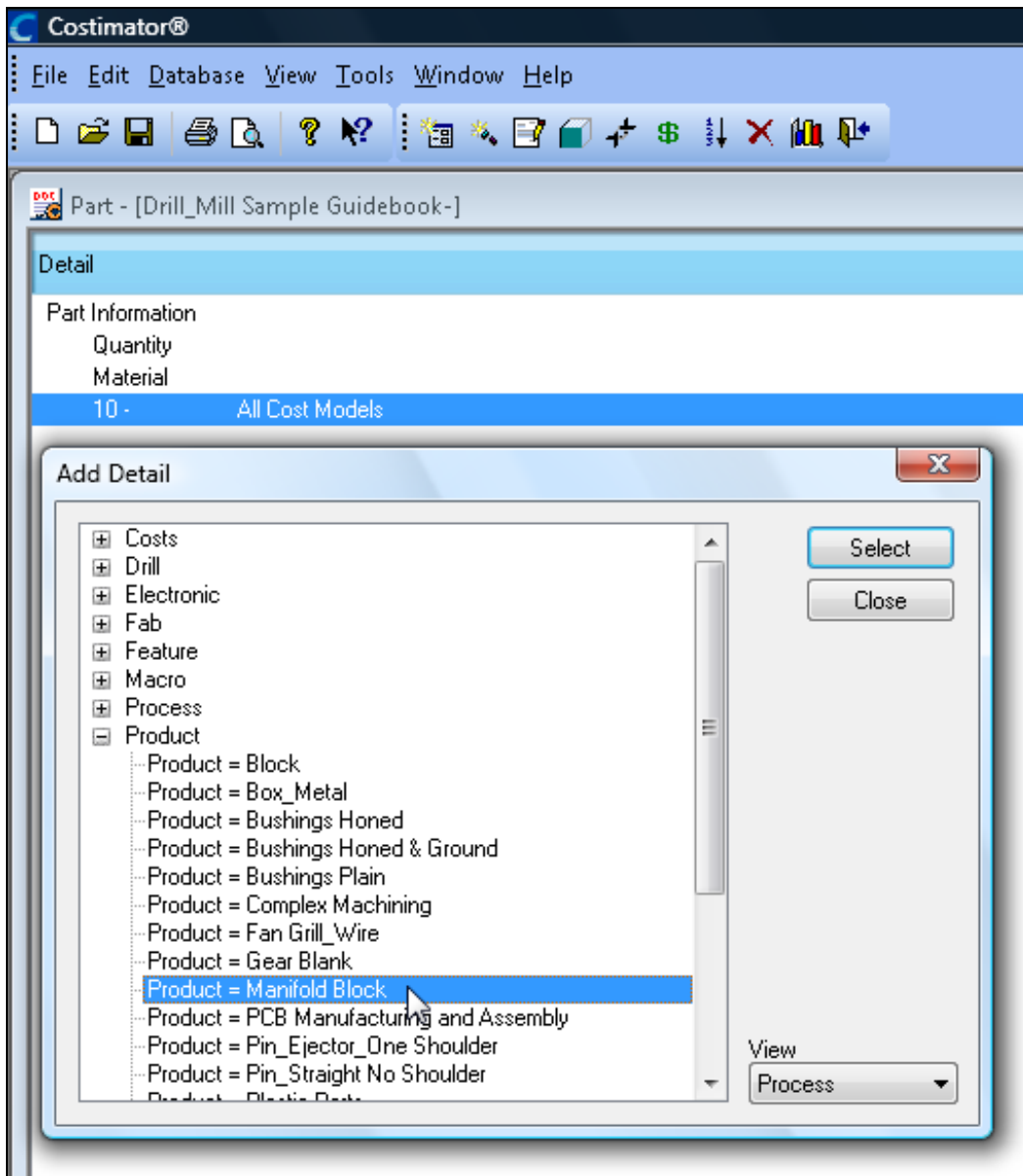




Step 2 → Part Quantity:
Enter a quantity.



Step 3 → Material Type:
Select material type & size.



Manifold Block:


Select "Manifold Block" from the list of Product Models.



Cost Modeler - [Product = Manifold Block]

Length	5.000	in
Width	4.000	in
Thickness	3.000	in
Cutout Area ?	5.350	sq in
Cutout Depth ?	0.500	in
Holes Finish Dia ?	2.000	in
Depth	3.000	in
Quantity	2.000	
Tap Holes ?	0.250 (1/4-20)	
Tap Hole Depth	3.000	in
Number of Tap Holes	11.000	
SAE Ports? Number	12 @ 1-1/16-12	
Number of Ports	2.000	
Time per piece	6.110	minutes
Cost per piece	2.620	

Buttons: OK, Cancel, Note..., Show Data..., Data Notes



Step 5

Enter Part Data:

This is the type of part that this cost model is used to estimate quickly and accurately.

FINISHED!



Showing detail for [Product = Manifold Block]

Variable Name	Display Name	Formula	Output Value
TimePiece	Time per Piece	Topcutime+Sidec...	366.614
Envelope		.250	0.250
Lgt	Length		5.000
Wdth	Width		4.000
Thk	Thickness		3.000
Partwgt		StockDensity() *L...	5.880
FacemillDia2		IIF('wdth <= 2.0 ...	0.000
FacemillDia4		IIF('wdth >2.0 An...	4.000
FacemillDia6		IIF('wdth >10 , 6...	0.000
FacemillDia		FacemillDia2+Fac...	4.000
Approach		(FacemillDia/2)+...	2.100
Topcutime		Mill_Facemill_Pos...	0.125
Sidecutime		Mill_Facemill_Pos...	0.044
Endcutime		Mill_Facemill_Pos...	0.035
Pocketarea	Cutout Area ?		5.350
Pocketdepth	Cutout Depth ?		0.500
PocketTime		Mill_PocketMill 2	1.189

Labor Rate = 25.725

Close

Here is how the program accurately calculates the estimate. In the background, the program is selecting the tooling, number of cuts, calculating speeds, feeds, checking the work center properties and more.

Costimator®

File Edit Database View Tools Window Help

Part - [Drill_Mill Sample Guidebook-]

Detail	Time (minutes per piece)	Cost per piece
Part Information	6.350	22,604
Quantity [Default=25]		
Material		17,640
Rectangle 3.000 x...		17,640
-10- All Cost ...	6.350	4,964
Product = Manifold ...	6.110	2,620

This is the time and cost to manufacture this part.

Thanks for taking the time to review this new and exciting version of the Costimator program. You will be as excited as we are once you get your copy of the new . . .

COSTIMATOR[®]

**Contact your Account Manager
for further details.**

MTI Systems, Inc.
59 Interstate Drive
West Springfield, MA 01089

800-644-4318

In Western Mass: 413-733-1972
Fax: 413-739-9250