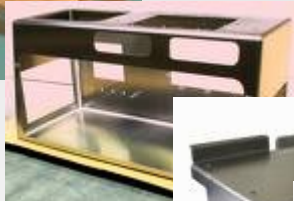


COSTIMATOR[®]

*How to estimate
Fabricated Parts
in less than
One Minute!*



COSTIMATOR®

Copyright © 2008 MTI Systems, Inc All Rights Reserved

All materials contained in this document, including text, graphics, icons are the property of MTI Systems, Inc and are protected by United States and international copyright laws. The compilation of all content on this site is the exclusive property of MTI Systems, Inc. No part of this document may be reproduced or transmitted in any form or by any means, electronic or mechanical, including photocopying, recording, or by any information storage and retrieval systems without our prior written permission. Further, you may not alter or remove any trademark, copyright or other notice from copies of content should you get our written permission.

Following is an example of how to estimate a part using the new Costimator system. Check the clock time as we move through the estimate.

Part

Initial Custom Other

Part Number Sheetmetal Fabrication 101

Part Name

Customer

Job Number

Revision

Drawing

Estimator tom

Salesperson

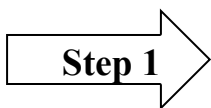
Due date

Default Plant <Not specified>

Note

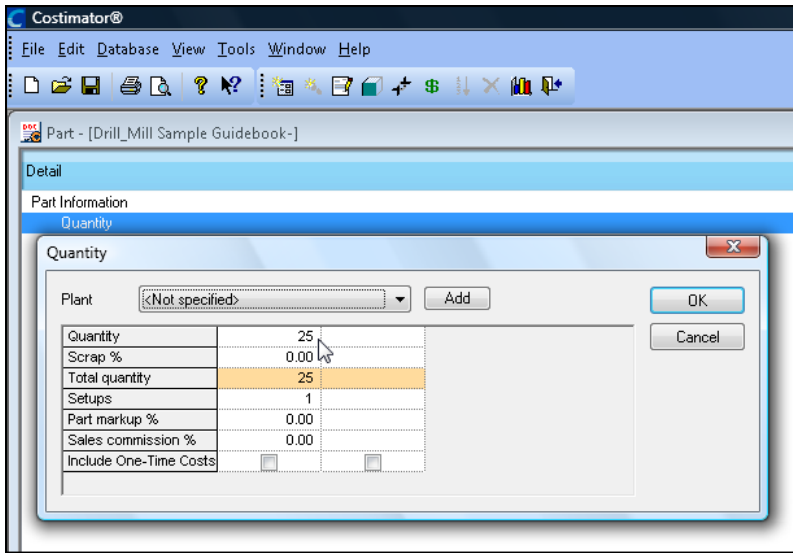
Default units

OK Cancel Help

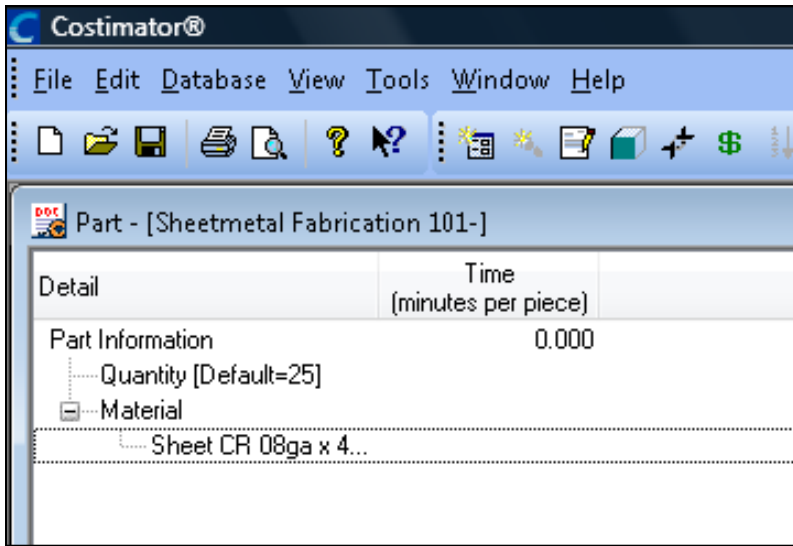


Getting Started:
Create a new part as shown

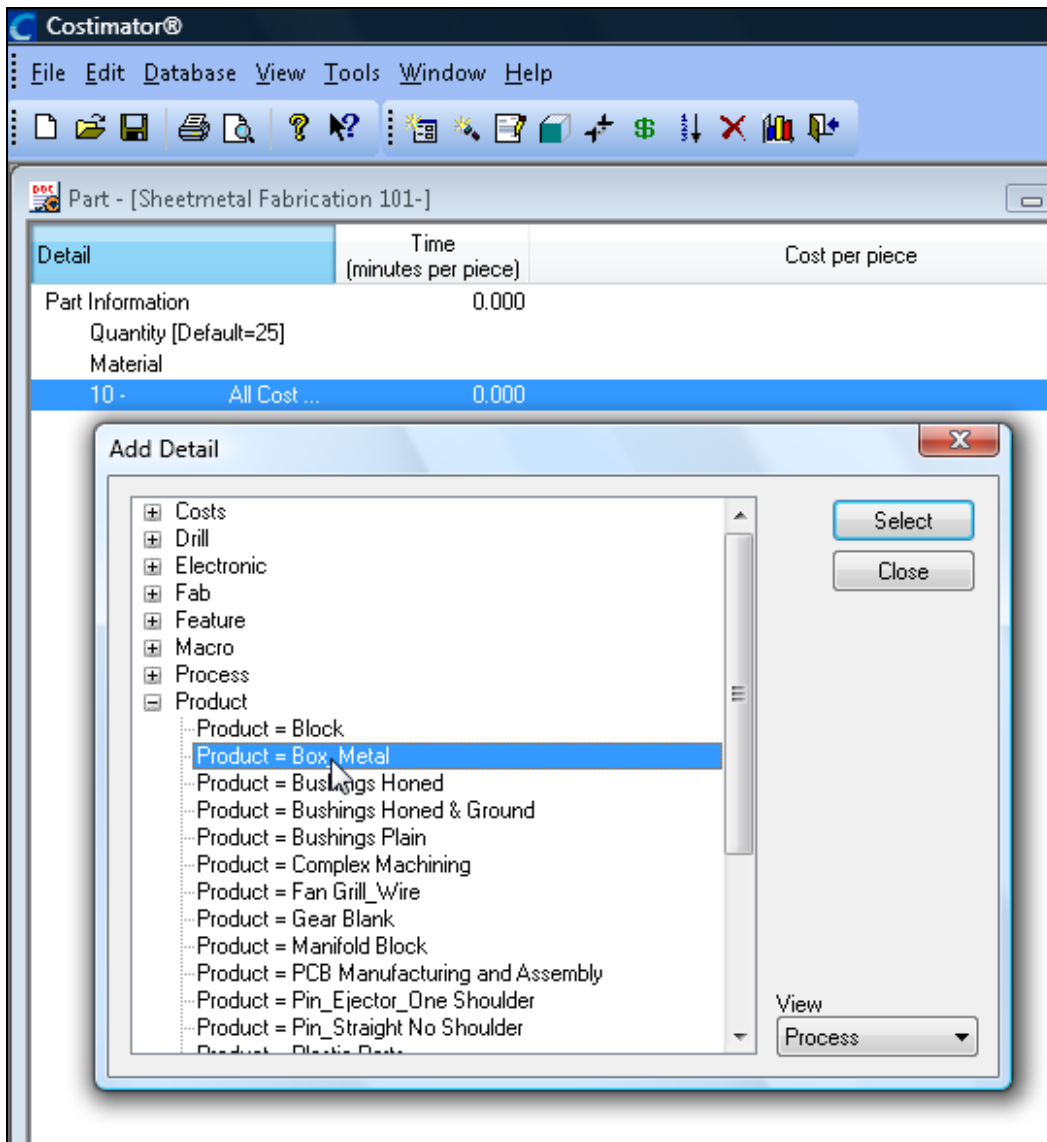




Step 2 → Part Quantity:
Enter a quantity.



Step 3 → Material Type:




Step 4 → **Box_Metal:**
Select "Box_Metal" from the list of Product Models.



Cost Modeler - [Product = Box_Metal]

Gage Number	08	
Thickness	0.164	in
Box Length	31.000	in
Box Width	27.000	in
Box Height	7.500	in
Bend Time	3.840	minutes
Weld Time	15.065	minutes
Grind Weld Time	12.773	minutes
Paint Time	0.500	minutes
Time per piece	33.701	minutes
Cost per piece	14.450	

Buttons: OK, Cancel, Note..., Show Data..., Data Notes



Step 5

Enter Part Data:

This is the type of part that this cost model is used to estimate quickly and accurately.

FINISHED!



Showing detail for [Product = Box_Metal]

Variable Name	Display Name	Formula	Output Value
TimePiece	Time per Piece	Time	2022.088
GageNum	Gage Number	Table_RowName...	8.000
Thk	Thickness	Table_Cell("She...	0.164
BoxLgt	Box Length		31.000
BoxWidth	Box Width		27.000
BoxHgt	Box Height		7.500
NumBends			4.000
ThkCheck040		IIF(Thk <= .040 ...	0.000
ThkCheck060		IIF(Thk >.040 An...	0.000
ThkCheck080		IIF(Thk >.060 An...	0.000
ThkCheck100		IIF(Thk >.080 An...	0.000
ThkCheck120		IIF(Thk >.100 An...	0.000
ThkCheck180		IIF(Thk >.120 An...	0.698
ThkCheck239		IIF(Thk >.180 , .9...	0.000
LaserDistance		(2*BoxLgt) + (2*B...	131.000
Lasertimeperinch		(ThkCheck040+T...	0.012
LaserTime		Lasertimeperinch*	1.524

Labor Rate = 25.725

Close

Here is how the program accurately calculates the estimate. In the background, the program is calculating the process, number of bends, welding distance, time, checking the work center properties and more.

Costimator®

File Edit Database View Tools Window Help

Part - [Sheetmetal Fabrication 101-]

Detail	Time (minutes per piece)	Cost per piece
Part Information	33.941	42.848
Quantity [Default=25]		
Material		16.316
Sheet CR 08ga x 4...		16.316
10 - All Cost ...	33.941	26.532
Product = Box_Metal	33.701	14.450

This is the time and cost to manufacture this part.

Thanks for taking the time to review this new and exciting version of the Costimator program. You will be as excited as we are once you get your copy of the new . . .

COSTIMATOR®

**Contact your Account Manager
for further details.**

MTI Systems, Inc.
59 Interstate Drive
West Springfield, MA 01089